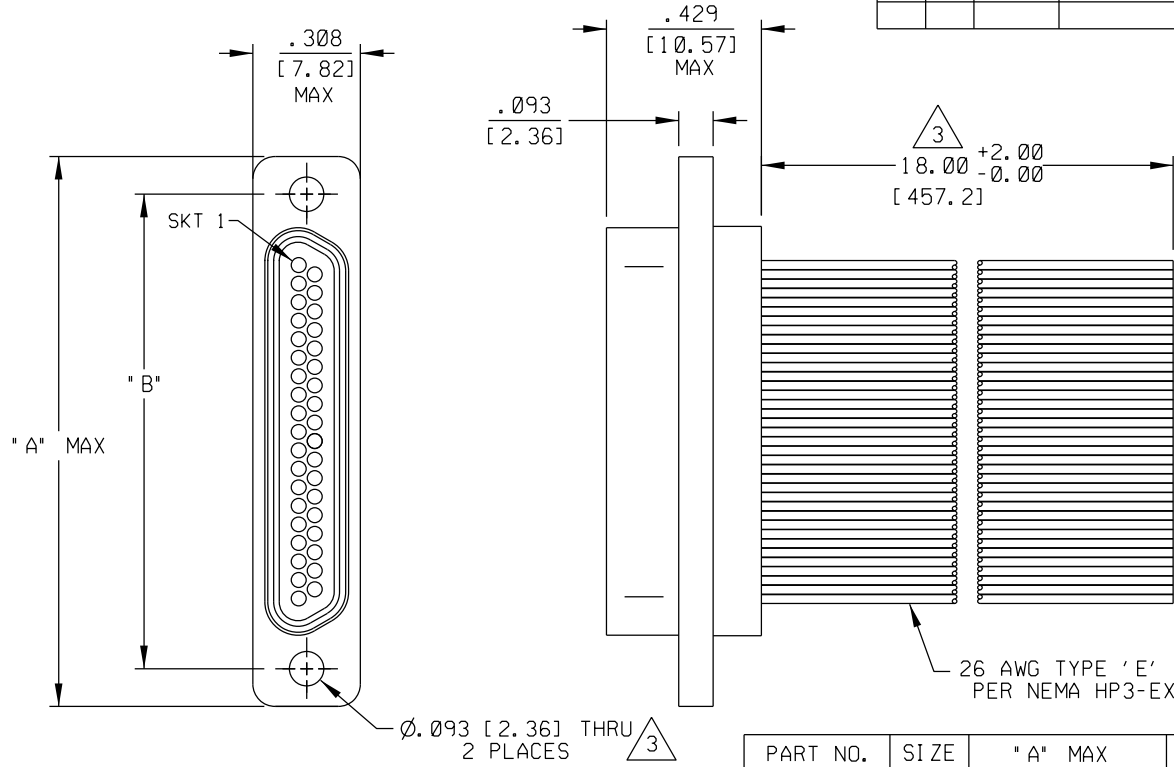


PART REV	DWG ISSUE	DATE	ECN NO.	APPVD BY	REL BY

COLOR CODE (PER MIL-STD-681)  $\triangle 3$

1	BLK	19	W/GRY
2	BRN	20	W/BLK/BRN
3	RED	21	W/BLK/RED
4	ORG	22	W/BLK/ORG
5	YEL	23	W/BLK/YEL
6	GRN	24	W/BLK/GRN
7	BLU	25	W/BLK/BLU
8	VIO	26	W/BLK/VIO
9	GRY	27	W/BLK/GRY
10	WHT	28	W/BRN/RED
11	W/BLK	29	W/BRN/ORG
12	W/BRN	30	W/BRN/YEL
13	W/RED	31	W/BRN/GRN
14	W/ORG	32	W/BRN/BLU
15	W/YEL	33	W/BRN/VIO
16	W/GRN	34	W/BRN/GRY
17	W/BLU	35	W/RED/ORG
18	W/VIO	36	W/RED/YEL
		37	W/RED/GRN



PART NO.	SIZE	"A" MAX	"B"
834211070	9	.785 [19.94]	.565 [14.35]
834221070	15	.935 [23.75]	.715 [18.16]
834231070	21	1.085 [27.56]	.865 [21.97]
834241070	25	1.185 [30.10]	.965 [24.51]
834251070	31	1.335 [33.91]	1.115 [28.32]
834261070	37	1.485 [37.72]	1.265 [32.13]

4. PERFORMANCE: MEETS OR EXCEEDS REQUIREMENTS OF MIL-DTL-83513.

$\triangle 3$  CONSULT FACTORY FOR AVAILABLE OPTIONS.

$\triangle 2$  MATERIALS:  
 SHELL: 6061-T6 ALUMINUM PER AMS-QQ-A200/8, NICKEL PLATED PER AMS 2404  
 INSULATOR: PPS PER MIL-M-24519 GST-40F, COLOR: BLACK  
 SOCKET CONTACTS: C21000 COPPER ALLOY PER ASTM B36, GOLD PLATED PER ASTM B488

INTERFACIAL SEAL: FLUOROSILICONE PER MIL-R-25988

1. MARKING: UMI, DATE CODE, UMI P/N.

NOTES: UNLESS OTHERWISE SPECIFIED.

QUALITY SYMBOLS MAJOR $\blacktriangledown$ = CRITICAL $\triangle C$ = SPC $\triangle S$ =	UNLESS SPECIFIED: ALL DIMENSIONS IN INCHES/MM GENERAL TOLERANCES: 3 PLACE $\pm .005 / .13$ 2 PLACE $\pm .01 / .25$ ANGULAR $\pm 2^\circ$	SCALE 3:1 DWG SIZE B	THIRD ANGLE PROJECTION	REVISE ON CAD ONLY
	DRAWN BY & DATE DW 10-7-11 CHECKED BY & DATE APPROVED BY & DATE	TITLE: MICRO-D RECEPTACLE (SKTS), SIZE 9 THRU 37, WIRED, MRXXS0-26E5-18.0-S01		
	CAD FILENAME SD-8342X1070.DGN	PART NO. SEE ABOVE	DRAWING NO. SD-8342X1070	SHEET NO. 1 OF 1
	THIS DRAWING CONTAINS INFORMATION THAT IS PROPRIETARY TO ULTI-MATE INCORPORATED AND SHOULD NOT BE USED WITHOUT WRITTEN PERMISSION.			

